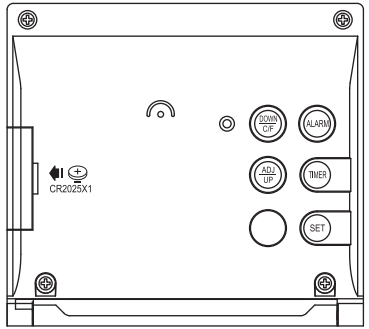
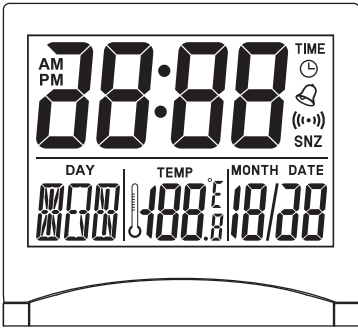


EN LCD ALARM CLOCK OPERATING INSTRUCTIONS

Thank you for your purchase of this quality clock. Please read these instructions carefully and keep in a safe place for future reference.



ACTIVATING THE CLOCK

Insert 1 X CR2025 battery into the battery compartment, taking care to observe the polarity. All segments will display briefly and the clock display will show 12:00. The clock will play alarm sound option 3.


SETTING THE TIME AND DATE

Press the SET button once the hour digits will flash. Press UP or DOWN button to set the hour, ensuring AM/PM is set correctly. Press the SET button once again, the minute digits will flash. Press UP or DOWN button to set the minutes. Press the SET button once again, the year digits will flash. Press UP or DOWN button to set the year. Press the MODE button once again, the month digits will flash. Press UP or DOWN button to set the month. Press the SET button once again, the date digits will flash. Press UP or DOWN button to set the date. Press the SET button once again to exit.



12/24 HOUR FORMAT

In normal time mode, press the UP button once to select between 12/24 hour format.

SETTING THE ALARM

Press the ALARM button once the bell icon  will display. Press the SET button once the hour digits will flash. Press UP or DOWN button to set the hour, ensuring AM/PM is set correctly. Press the SET button once again, the minute digits will flash. Press UP or DOWN button to set the minutes. Press the ALARM button once again, the display will show '60' and flash. Press UP or DOWN button to set snooze duration from 1 to 60 minutes. Press the SET button once again, the alarm sound option '1' will flash. Press UP or DOWN button to select between options 1-9. Press the SET button once again to exit.

TO TURN ON/OFF THE ALARM/SNOOZE

Press the ALARM button once the bell icon  will display. To turn ON the alarm, press the UP button once and the alarm icon  will display. Press the UP button once again to turn ON the snooze function and the SNZ icon will display. Press the UP button once again to turn OFF the alarm and snooze.

USING THE SNOOZE FEATURE

When the alarm sounds, press the ALARM button to snooze the alarm for the preset snooze duration. The SNZ icon will flash. To stop the snooze function turn OFF the alarm/snooze.

SETTING THE TIMER

Press the TIMER button once. Press the SET button once and the hour digits will flash. Press UP or DOWN button to set the hour. Press the SET button once again, the minute digits will flash. Press UP or DOWN button to set the minutes. Press the SET button once again, the seconds digits will flash. Press UP or DOWN button to set the seconds. Press the TIMER button to START/STOP the timer. Note: Press the ALARM button to return to the time/alarm display.

TO SELECT TEMPERATURE IN DEGREE °C OR °F

In normal time mode, press the DOWN button to select °C or °F.

CHANGING THE BATTERIES

It is recommended that you replace the batteries annually even if the product is still running. Only use CR2025 (3V) Alkaline batteries in this clock. Do not mix old and new batteries, different types or brands. Remove the batteries if the clock is stored or not in use. Remove exhausted batteries from the product.

Warning: Do not recharge non-rechargeable batteries.

Please dispose of used battery in a responsible manner. For more information please contact your local authority.

MAINTENANCE

A soft cloth may be used to clean your clock. Do not use any corrosive cleaner or chemical solutions on the clock. Keep the clock clean and dry to avoid any problems.

YOUR GUARANTEE

Your clock is guaranteed for 2 years from the date of purchase against any faults arising from defective materials or manufacture. Damage caused through careless handling, misuse or in transit is expressly excluded. Should this clock fail within 2 years please return it to your retailer.

Environmental Protection

Disposal of electrical & electronic equipment



Do not dispose of this product with household waste. For the proper treatment, recovery and recycling please take this product to the appropriate collection point. If you are unsure of where this is contact your local authority. Improper disposal may be harmful to the environment.



15782_3_7

For more innovative Acctim products please visit: www.acctim.com